



## Phlebotomy for Nursing Personnel 2010

<http://www.piccresource.com>

Main: (888) 892-9422

Fax: (914) 885-1711

Registrations: (866) 487-0556

SPRING FLYER, ISSUE 10

UPDATE: FEB. 18TH 2010

Schedule a class at your facility!

**Phlebotomy for Nursing Personnel Class Overview:** Prerequisites: Current healthcare background in a profession in which phlebotomy is allowed (RN, LPN, CNA, MT, GN, etc.) Questions? Call for details or email us at [customer\\_support@piccresource.com](mailto:customer_support@piccresource.com)

- |  |  |  |
|--|--|--|
| * Anatomy and Physiology   | * Venipuncture techniques  | * Case studies   |
| * Devices & Methods used for venipuncture & capillary sample collections     | * Capillary puncture techniques                                    | * Tips for successful venipuncture   |
| * OSHA regulations   | * Tubes and tube additives   | * Phlebotomy exam  |
| * Personal Protective Equipment  | * Tests and Order of Draw  | * Scoring, exam review   |
| * Needle Safety Standards  | * Prevention of test result errors                                 | * Lab practicum  |
| * National standards of the Clinical Laboratory & Standards Institute (CLSI) | * Patient identification   | * Evaluations, & certificates  |
| * Preparation of Supplies and equipment                                      | * Timing, labeling & specimen handling                             | * A light lunch is included.   |
| * Site selection, preparation  | * Complications of phlebotomy procedures, prevention and treatment | ** Application has been made for 7.1 contact hours-valid nationally. This program is approved until March 31st 2012. |
|  | * Legal Issues   |  |

Date(s):	Place	Time
March 31, 2010	4 Research Dr., Suite 402 Shelton, CT	8 hour class 8:45 am to 4:45 pm

**Beware of Claims of Certification In One Day:** Anyone can claim to offer certification and employers are aware that the term is loosely used by a lot of companies. Where is the certification from? True certification verifies that one is competent to safely perform procedures *independently*. This is legitimately granted by organizations that set standards and guidelines for the industry. Knowing the requirements of the true national phlebotomy certification organizations and in fairness to our course participants we do not offer a meaningless “certification” for attending a one day class. Our phlebotomy class is designed to prepare participants to understand and perform phlebotomy procedures. We also provide the tools needed for the participant to continue to pursue competency validation or legitimate phlebotomy certification after our program.

Program Location: PICC Resource Office in Shelton, CT. Sign up early, space is limited to 10 registrants, call to check availability.

**Instructor:** Alice Cennamo, RN, CRNI, Certified Phlebotomy Instructor through the National Phlebotomy Association (NPA), and Infusion Specialist .

**To Register:** Registration and payment can be done online at:

<http://www.piccresource.com/cart> ;

by calling our Orders Department at (866) 487-0556 (open from 8 am–12 midnight weekdays, and 9 am to 9 pm weekends); by fax of a registration form to us at (914) 885-1711, or by mailing a registration in with a check. Any checks mailed in must be received

by us well in advance of the class date. Payments sent by mail are subject to seating availability. We cannot guarantee to hold a space prior to payment receipt. We prefer to receive registrations by 4 weeks prior to a class date. However we will continue to accept registrations until the class has filled.

\*\*Application has been made for contact hours through the New York State Nurses Association, an accredited approver by the American Nurses Credentialing Center's Commission on Accreditation.

## Phlebotomy for Nursing Personnel Class

(There is no commercial support for this activity.)

**Target audience:** Nurses, nursing personnel and other health care professionals that are allowed to draw blood samples per state regulations as part of their job.

**Overall goal of the activity:** To instruct nursing and other health care professionals in basic phlebotomy venipuncture and capillary puncture techniques, common blood tests, and sample handling.

Activity Goals and Objectives- Upon successful completion of this activity the attendee will be able to:

- 1: Describe two ways vein anatomy differs from arterial anatomy .
- 2: List two devices used for collection of blood samples
- 3: State the rationale for drawing into tubes in the correct order.
- 4: Describe two ways to prevent test result errors, and rationale for identifying the correct patient.
- 5: Describe three potential complications of a phlebotomy procedure.
- 6: Describe how to choose a viable vein for venipuncture.
- 7: List two steps in obtaining a blood sample utilizing the vacutainer or syringe method
- 8: List two steps of the Skin Puncture technique for capillary blood sampling
- 9 Score 75% or better on Phlebotomy test
- 10 Agree that after completion of this program and prior to performing phlebotomy procedures independently on patients to: perform phlebotomy procedures on patients under supervision with a qualified and experienced preceptor until credentialed as competent in the procedure per the course attendee's healthcare organizational policy and procedures and state of residence regulations.

To register and pay online, follow the instructions on page 1. Our info for mail in or fax follows below.

Fax of credit card- Enter card Type: \_\_\_\_\_

Card#: \_\_\_\_\_

Expiration date: \_\_\_\_\_ Security Code: \_\_\_\_\_

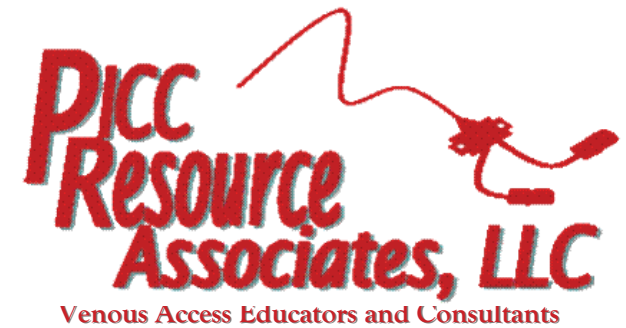
Billing name & address match registrant? If not enter here: \_\_\_\_\_

Checks payable to: PICC Resource Associates, LLC

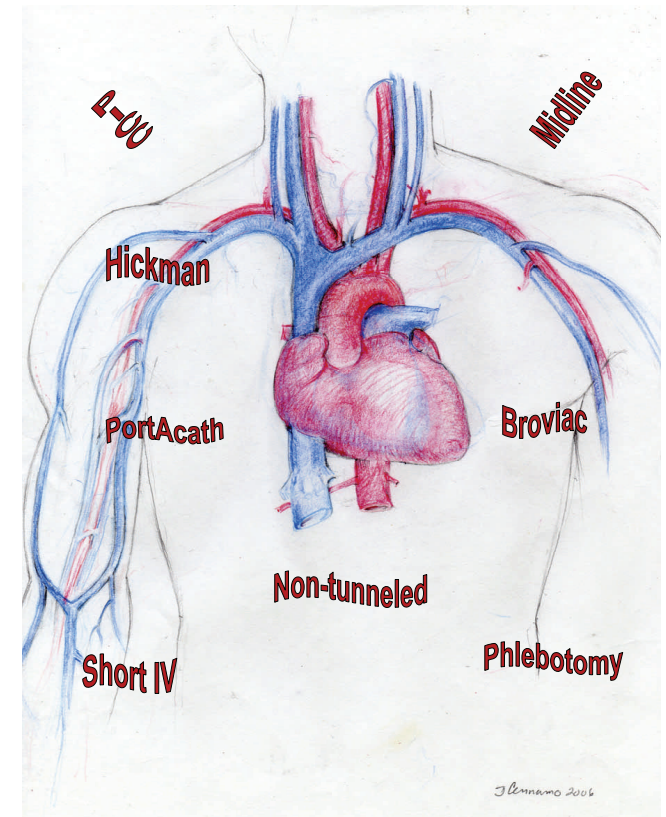
Mailing address: 4 Research Drive, Suite 402  
Shelton, CT 06484

Fax: (914) 885-1711

**PICC Resource Associates, LLC**  
4 Research Drive  
Suite 402  
Shelton, CT 06484



## Phlebotomy for Nursing Personnel In-Person Workshop 2010



<http://www.piccresource.com>  
Office Phone: (888) 892-9422  
Registrations Phone: (866) 487-0556